



residences

**508**  
THRU  
**708**

square feet

**650**

floors

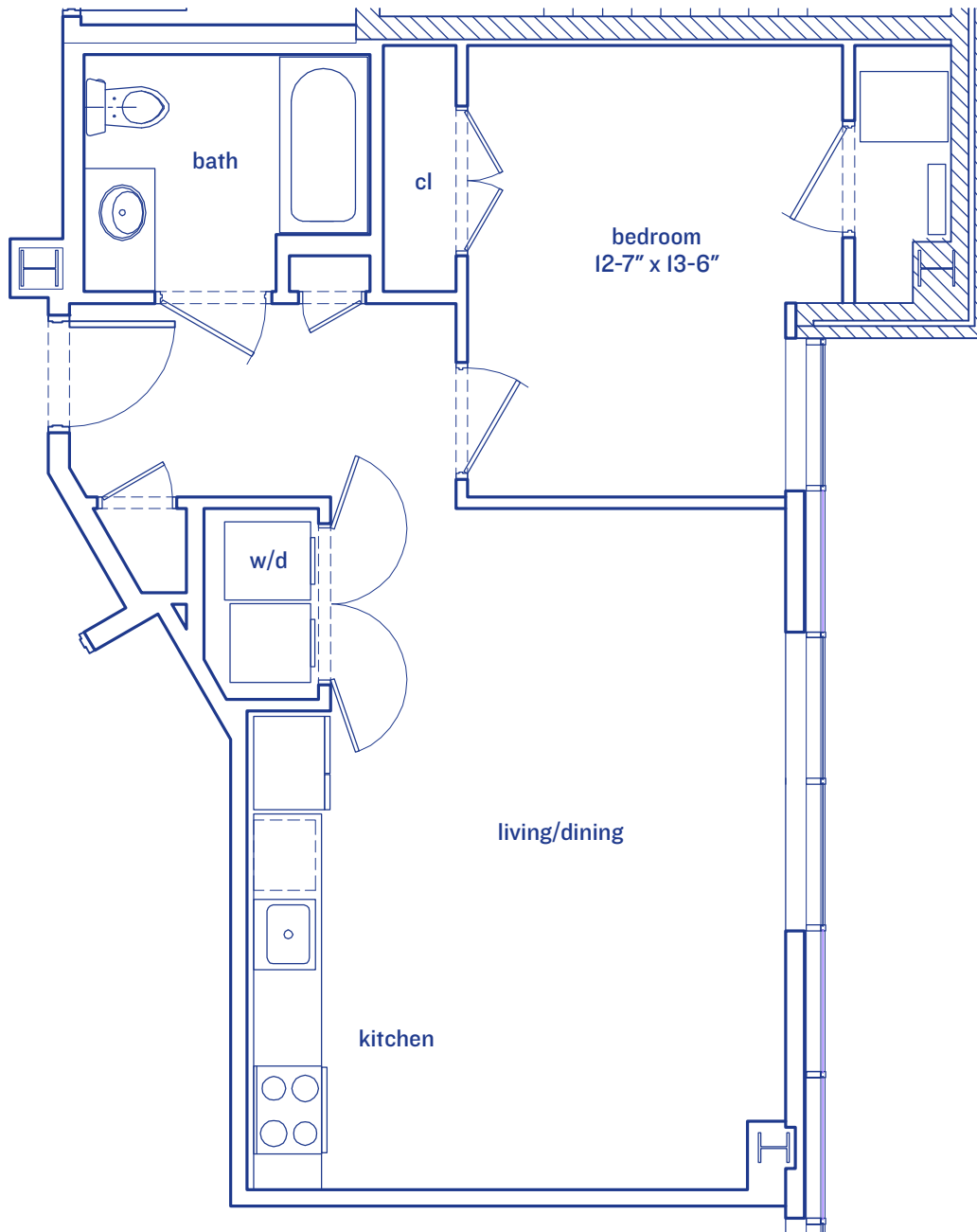
**5-7**

bedrooms

**1**

baths

**1**



contact

**203-339-5904 333STATE.COM**

THE UNIT LAYOUT, SQUARE FOOTAGE AND DIMENSIONS ARE APPROXIMATE AND SUBJECT TO NORMAL CONSTRUCTION VARIANCES AND TOLERANCES. SQUARE FOOTAGES EXCEED THE USABLE FLOOR AREA. THIS FLOOR PLAN IS BASED ON CONSTRUCTION DRAWINGS.

